



THE LAND ROVER COLLECTION 2021



ABOVE & BEYOND



CONTENTS

THE LIFESTYLE COLLECTION	05
MEN'S APPAREL	08
WOMEN'S APPAREL	16
GIFTS AND LIFESTYLE	20
LUGGAGE	28
SUNGLASSES	32
RANGE ROVER COLLECTION	34
THE ABOVE AND BEYOND COLLECTION	45
MEN'S AND WOMEN'S APPAREL	48
DOG RANGE	66
ACCESSORIES	72
MODEL CARS	86
THE HERITAGE COLLECTION	91
MEN'S APPAREL	94
ACCESSORIES	96
DOG RANGE	104

EQUIP YOURSELF FOR THE ALL-TERRAIN LIFESTYLE. WITH ACCESSORIES AND APPAREL THAT TAKE LAND ROVER DESIGN INTO NEW TERRITORY. FEATURING EVERYTHING FROM CLASSIC CHRONOGRAPHS TO COLLECTORS' EDITION SCALE MODELS, IT'S A RANGE THAT'S RUGGED AND STYLISH. INSPIRED BY THE LAND ROVER SPIRIT OF ADVENTURE. AND BUILT TO GO THE DISTANCE.



ABOVE & BEYOND



THE LIFESTYLE COLLECTION



ABOVE & BEYOND

A man with a beard and short dark hair is wearing a blue high-necked jacket. He is standing outdoors, leaning against a large, textured stone wall. The background shows a blurred landscape with hills and a fence. The overall tone is rugged and adventurous.

THE LIFESTYLE COLLECTION

LIVE ALL TERRAIN

Whether you're escaping the city or exploring it, the Land Rover collection is at home in every terrain. Distinctive and well crafted, it's a range of apparel and accessories designed for life, wherever it's lived.

MEN'S APPAREL

The all-terrain spirit of Land Rover continues in our menswear collection. Instilled with the same unrivalled versatility, it's ready for anywhere.

MEN'S HOODED RAIN JACKET

Take shelter seriously with this water-resistant jacket. Lined with breathable mesh, it features an adjustable hood and Land Rover perforation detailing and chamfering throughout. Finished with taped seams and Durable Water Repellent (DWR®) coating.

Navy - CHF 195.-

S LGJM452NVC
M LGJM452NVD
L LGJM452NVE
XL LGJM452NVF



MEN'S APPAREL



MEN'S MODERN DRIVER'S JACKET

Be ready for every kind of road. This contemporary driver's jacket offers incredible versatility. Features quilted shoulders, branded poppers to the cuffs and a brushed-metal effect wordmark tag. Water-resistant zips and DWR® coating.

Black - CHF 170.-

S LGJM450BKC
M LGJM450BKD
L LGJM450BKE
XL LGJM450BKF



MEN'S ZIP UP SOFTSHELL JACKET

Softshell made from a nylon elastane mix for ultimate protection and mobility. Features laser-cut Land Rover perforation detailing, and chamfering. With storm cuffs, a concealed hood and microfibre lined pockets for added warmth.

Navy - CHF 155.-

S LGJM451NVC

M LGJM451NVD

L LGJM451NVE

XL LGJM451NVF



MEN'S CLASSIC SHIRT

Smart button-down collar shirt made from an easi-care cotton mix. Features welt pocket with pen section and tonal Land Rover wordmark. Contrast detailing to the buttons, placket, inner lining and cuffs.

Grey - CHF 79.-

S LGSM453GYC

M LGSM453GYD

L LGSM453GYE

XL LGSM453GYF

MEN'S APPAREL



OVAL BADGE MESH BACK CAP

Comfortable and breathable cap with oval badge to the front. Features contrast piping and eyelets, Land Rover wordmark tape to the interior, rear mesh panels and an adjustable snapback.

Green - LGCH489GNA

CHF 33.-



WORDMARK CAP

Two-tone cap with Land Rover wordmark. Features contrast peak and eyelets, wordmark tape to the interior and a branded metal adjuster.

Navy - LGCH455NVA

CHF 27.-

**MEN'S ACCENT COLLAR POLO SHIRT**

100% cotton piqué polo shirt with contrast tipping to the collar and cuffs. Features Land Rover wordmark to the chest, concealed buttons, and a side tab with Land Rover perforation detailing.

Grey - CHF 59.-

S LGPM456GYC
M LGPM456GYD
L LGPM456GYE
XL LGPM456GYF

**MEN'S ACCENT COLLAR POLO SHIRT**

100% cotton piqué polo shirt with contrast tipping to the collar and cuffs. Features Land Rover wordmark to the chest, concealed buttons, and a side tab with Land Rover perforation detailing.

Navy - CHF 59.-

S LGPM456NVC
M LGPM456NVD
L LGPM456NVE
XL LGPM456NVF

**MEN'S RELIEF MAP T-SHIRT**

A cotton jersey crew neck T-shirt with high build topography graphic. Features Land Rover wordmark, twin-needle stitching to the hem and sleeves and a side tab with Land Rover perforation detailing.

Grey - CHF 43.-

S LGTM457GYC
M LGTM457GYD
L LGTM457GYE
XL LGTM457GYF

**MEN'S RELIEF MAP T-SHIRT**

A cotton jersey crew neck T-shirt with high build topography graphic. Features Land Rover wordmark, twin-needle stitching to the hem and sleeves and a side tab with Land Rover perforation detailing.

Navy - CHF 43.-

S LGTM457NVC
M LGTM457NVD
L LGTM457NVE
XL LGTM457NVF

WOMEN'S APPAREL

Always effortlessly stylish. Now enhanced with smart thermal technology. This collection of womenswear breaks new ground, wherever you wear it.

WOMEN'S QUILTED GILET

A tapered fit gilet designed to retain your body heat. Features thermal insulation, heat-welded panels and side pockets. With geometric graphic detail to the inner lining and upper back, silicone sports zip-pulls and printed Land Rover wordmark to the chest. Water-resistant with DWR® coating.

Navy - CHF 155.-

8 LGJW487NVI
10 LGJW487NVJ
12 LGJW487NVK
14 LGJW487NVL
16 LGJW487NVM



WOMEN'S QUILTED JACKET

Combat the cold with this all-weather quilted jacket in a tapered fit. Features thermal insulation, heat-welded panels, high neck and side pockets. With geometric graphic detail to the inner lining and upper back, sports zip-pulls and Land Rover wordmark to sleeve. Water-resistant with DWR® coating.

Navy - CHF 215.-

8 LGJW486NVI
10 LGJW486NVJ
12 LGJW486NVK
14 LGJW486NVL
16 LGJW486NVM



WOMEN'S APPAREL



WOMEN'S WORDMARK T-SHIRT

A cotton elastane jersey T-shirt in our new tapered fit. Features subtle Land Rover wordmark to the chest, twin-needle stitching, and a side tab with Land Rover perforation detailing.

Navy - CHF 43.-

8 LGTW484NVI
10 LGTW484NVJ
12 LGTW484NVK
14 LGTW484NVL
16 LGTW484NVM



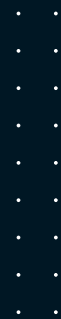
NECK WARMER

Ward off winter with this multifunctional unisex Neck Warmer. Made from performance poly-elastane, with topography graphic and Land Rover wordmark to the front.

Navy - LGSF459NVA

CHF 25.-





GIFTS & LIFESTYLE

From high-performance pens to classic collectibles, gift beyond the ordinary with our exclusive range of Land Rover lifestyle accessories.

1. LANYARD

A smart Lanyard with contrast grey leather trim and lobster clasp. Features geometric graphic detail to one side and Land Rover wordmark to the other.

Navy - LGGF470NVA
CHF 9.–

2. PERFORATED LEATHER LOOP KEYRING

A hard-wearing loop keyring made from fine leather. Features debossed Land Rover wordmark and perforation detailing, with bamboo colour stitching.

Navy - LGKR468NVA
Ivory - LGKR468IVA
CHF 25.–

3. NYLON WALLET

Textured wallet with Land Rover wordmark and chamfering stitch detail. Features contrast grey interior with space for three cards and a coin pocket.

Navy - LGGF465NVA
CHF 57.–

4. MATTE CERAMIC TRAVEL MUG

This double-walled ceramic travel mug features the Land Rover wordmark and silicone band around the middle.

Navy - LGMG491NVA
CHF 27.–

5. MATTE STONEWARE MUG

Branded stoneware mug with a robust construction and a matte Navy finish. Features Land Rover wordmark and geometric graphic detail.

Navy - LGMG474NVA
CHF 21.–

6. WATER BOTTLE / STAINLESS STEEL TRAVEL FLASK

Food grade travel flask with easy-grip surface. Features Land Rover wordmark and geometric graphic detail.

Navy - LGGF460NVA
CHF 39.–



**LAND ROVER iPhone XS COVER**

iPhone case featuring geometric graphic detail and Land Rover wordmark. Made from hard plastic with a rubberised matte finish.

Navy - LGPH521NVA
CHF 19.–

**LEATHER iPhone XS CASE**

Leather iPhone case, featuring foil Land Rover wordmark.

Navy - LGPH519NVA
CHF 35.–

**POCKET UMBRELLA**

A Navy pocket-sized umbrella featuring the Land Rover wordmark.

Navy - LEUM282NVA
CHF 35.–

**PREMIUM GOLF UMBRELLA**

Non-conductive fibreglass frame golf umbrella. Features vented canopy for additional wind resistance and Land Rover wordmark to the canopy edge.

Navy - LEUM123NVA
CHF 60.–

**USB BATTERY POWER CHARGER**

Anodised aluminium USB power charger with laser-engraved Land Rover wordmark and geometric graphic detail. Includes 3-in-1 cable with micro, lightning and type C connectors. 8000mAh external battery.

W 74mm H 150mm D 11.8mm
Navy - LGPH473NVA
CHF 55.–

**LEATHER WRAPPED iPhone CABLE**

USB cable for iPhone with leather casing in Navy. Includes 3-in-1 cable with micro, lightning and type C connectors. With Land Rover wordmark and oval badge on the connectors. MFI certified.

Navy - LGPH495NVA
CHF 39.–

**DEFENDER MULTI TOOL**

Black steel credit card sized multi tool crafted into a Defender silhouette. Features a range of practical tools including tyre tread gauge.

Black - LDTT619NVA
CHF 22.–

**TRAVEL MUG STAINLESS STEEL**

This stainless steel travel mug features an easy to grip silicone band around the middle and Terrain Response® branding.

Navy - LGMG915NVA
CHF 26.–



RELIEF MAP TOTE BAG

Reusable canvas tote bag with topography graphic in contrast navy. Features Land Rover wordmark to the front.

Ecru - LGLU461WTA
CHF 9.–



NOTE BOOK LARGE A5

A notebook to travel with. Featuring Land Rover wordmark and perforation detailing to the front cover. With matching elastic strap and bookmark ribbon.

Navy - LGNB517NVA
CHF 19.–

CARAN D'ACHE FOR LAND ROVER BALLPOINT PEN

Embodying the true spirit of Land Rover, these durable writing instruments have been designed in collaboration with renowned Swiss stationer, Caran d'Ache. Made from anodised aluminium and finished in a choice of three Land Rover colours, these are pens that never fail to impress.

Orange - LFPN369ORA
Black - LFPN369BKA
Gunmetal - LFPN369GUA
CHF 58.–



LAND ROVER SOLAR WATCH

A new generation solar-powered chronograph with 3 auxiliary sub-dials. Fitted with high-resistance mineral glass and a rubber strap for active use. Features power reserve indicator, orange detailing and Land Rover wordmark. Supplied in Land Rover presentation box.

Black - LHWM976BKA
CHF 469.–

CHILDREN'S TRICYCLE

All the fun on three wheels. This sturdy single-tube trike with multi-use platform will be their vehicle of choice for every adventure. Finished in Tectonic Grey with Orange front fork. Suitable for children aged 2-5 years.
Grey - LFBK364GYA
CHF 171.-



GIFTS & LIFESTYLE



RANGE ROVER RIDER RIDE ON

This ride-on car with working front and rear LED lights features low-noise tyres and a soft-touch seat for comfort. Suitable for children aged 18-36 months. Lights powered by 3 x AA batteries (not included).

White - LDTY926WTA

Red - LDTY926RDA

CHF 245.-



• •
• •
• •
• •
• •
• •
• •
• •
• •
• •

LUGGAGE

Our state-of-the-art luggage is made for exploring new lands and new opportunities. When the adventure never ends, it's the place to start.



NYLON HOLDALL

Whatever you're packing for, you'll be well prepared with this Nylon Holdall. This versatile bag with padded shoulder strap, internal pockets and compartments, features Land Rover chamfering and wordmark branding to the front panel and is finished with bamboo colour trim and zip-pulls.

Navy - LGLU462NVA
CHF 155.-



NYLON BRIEFCASE

All-purpose briefcase with 16" protective laptop sleeve. Features quilted panelling on both sides, bamboo colour trim and Land Rover chamfering, with wordmark to the front panel and padded shoulder strap.

Navy - LGLU464NVA
CHF 129.-

NYLON RUCKSACK

Versatile rucksack with internal organiser and 16" protective laptop sleeve. Features quilted panelling on both sides, bamboo colour trim and zip-pulls, with Land Rover chamfering and wordmark to the front.

Navy - LGLU463NVA
CHF 125.-

LUGGAGE





LAND ROVER BUSINESS HARD CASE

Taking design cues from our Land Rover skid plate, this business case in Graphite Grey is ready for whatever the workday brings. A polycarbonate shell, an aluminium frame and TSA-approved locks mean important documents are always kept secure. An insert badge to the front and a woven wordmark to the inner lining add style, while more practical touches include several internal compartments and an extendable handle.

Business - LELU261GYA
W 45cm H 35cm D 20cm
Graphite Grey - CHF 275.–

LAND ROVER HARD CASE SUITCASES

Taking design cues from our Land Rover skid plate, these hard cases in Graphite Grey are as resilient and adventure-ready as our vehicles. A polycarbonate shell, aluminium frame and TSA-approved locks mean you'll always travel securely. An insert badge to the front and a woven wordmark to the inner lining add style, while practical touches include several internal compartments and multidirectional tour wheels.

Small - LELU262GYA
W 35cm H 55cm D 23cm
Graphite Grey - CHF 345.–

Large - LELU264GYA
W 50.6cm H 73cm D 34cm
Graphite Grey - CHF 475.–

Medium - LELU263GYA
W 46.5cm H 68cm D 26cm
Graphite Grey - CHF 420.–

SUNGLASSES

With anti-glare technology and high UV protection, our Land Rover branded sunglasses mean you can look forward to every horizon.



1. LAND ROVER NEVIS SUNGLASSES

Purposely designed to reduce visual glare, these next generation Nevis Sunglasses feature a subtle Land Rover wordmark to the frame.

Gunmetal - LEGM373GYA
CHF 225.- LIMITED AVAILABILITY

2. LAND ROVER LONGNOR SUNGLASSES

Reflecting Land Rover's British heritage, these Longnor Sunglasses feature a distinctive British style hinge with a textured frame in Green and Grey.

Green / Grey - LEGM370GNA
CHF 225.- LIMITED AVAILABILITY

3. LAND ROVER SNOWDON SUNGLASSES

Utilising innovative matte acetate materials and protective polarised OBEXTM mirror lenses, these Snowdon Sunglasses have been crafted for an active, outdoor lifestyle.

Tortoiseshell - LEGM377BNA
CHF 270.- LIMITED AVAILABILITY

4. LAND ROVER USK SUNGLASSES

A sophisticated style suited for all occasions, these Usk Sunglasses feature a modern eye shape with the Land Rover wordmark to the lens.

Black - LEGM379BKA
CHF 225.- LIMITED AVAILABILITY

5. LAND ROVER SCAPELL SUNGLASSES

Ideal for the rugged adventurer, the Scafell Sunglasses have a monobloc construction with a fitted wrap-around frame and OBE hinges.

Blue - LEGM376BLA
CHF 225.- LIMITED AVAILABILITY

6. LAND ROVER MERRICK SUNGLASSES

Made from premium acetate and crafted with a flex hinge and mirror lenses. These components work to create a sleek and masculine frame. The ideal outdoors accessory.

Black - LEGM371BKA
CHF 270.- LIMITED AVAILABILITY

RANGE ROVER COLLECTION
REFINEMENT REDEFINED



Refinement is all in the details. It's a story told in the quality of our materials and our sophisticated design. Something you can see in our exclusive range of lifestyle accessories, inspired by the luxurious Range Rover interiors. It's more than refinement. It's refinement redefined.



RANGE ROVER WATCH

A refined watch inspired by the classic Range Rover marque. Featuring black sun-ray dial and Milanese strap. Ultra-thin black gloss design with quartz movement. Supplied in high gloss piano black branded watch box. Water-resistant to 5 ATM. Black - LHWM973BKA
CHF 495.-





RANGE ROVER LEATHER WALLET

An elegant cross-grained leather wallet in Deep Garnet with chevron print to the inner lining. Features Range Rover Rotary Dial detail with debossed wordmark to the inside.

Deep Garnet - LGLG419BUA
CHF 105.–

RANGE ROVER CARD CASE

Cross-grained leather card case in Deep Garnet with four card slots and a centre note compartment. Features Range Rover Rotary Dial detail with debossed wordmark to the reverse.

Deep Garnet - LGLG420BUA
CHF 75.–

RANGE ROVER CUFFLINKS

A refined set of whale-back cufflinks inspired by the Range Rover Rotary Dial and crafted from milled steel. With a Black nickel finish and debossed wordmark.

Black - LGCL417BKA
CHF 92.–



UNISEX RANGE ROVER CAP

Stylish Range Rover headwear. Created in tandem with our vehicle design studio. Sharp black trim. Chevron stitching. 3D metal effect branding. Fully adjustable with high quality gunmetal hardware.

Black - LHCH961BKA
CHF 49.-



RANGE ROVER SUNGLASSES - RRS103 SILVER

Lightweight aviator-style sunglasses in Silver. Machined from a single sheet of Japanese Beta-titanium, with NXT® polarized lenses for ultimate UV protection and colour clarity. Other styles available.

Silver - LGGM523SLA
CHF 395.-

RANGE ROVER COLLECTION

RANGE ROVER LEATHER HOLDALL

True style is never overstated. This classic holdall is fashioned from supple full-grained leather. Featuring a discreet Range Rover wordmark, soft interior lining and a detachable shoulder strap. Finished with leather zip-pulls, gunmetal hardware and trim.

Black - LGLU455BKA
CHF 665.-





RANGE ROVER LEATHER TOTE BAG

Style, simplicity, sophistication. It all comes to the fore with this cross-grained leather tote bag in Deep Garnet. Featuring a chevron print lining with an easy-to-reach internal key pocket, its design is understated yet unmistakable. Subtle branding includes a Range Rover Rotary Dial detail with magnetic closure, and a debossed wordmark to the reverse.

Deep Garnet - LGLX423BUA
CHF 439.–

RANGE ROVER LEATHER FLAP PURSE

Cross-grained leather purse in Deep Garnet with eight card slots and an internal zip pocket. Features Range Rover Rotary Dial detail with concealed press stud, and debossed wordmark to the reverse.

Deep Garnet - LGLG422BUA
CHF 165.–

RANGE ROVER COLLECTION

MONTTEGRAPPA FOR RANGE ROVER PEN

Made from a robust polymer with a sleek Black finish, this premium pen features the technical detailing of our Sports Utility Vehicle. Designed by Land Rover and made by Montegrappa, the first Italian designer of superior writing instruments, each pen is a fine example of craftsmanship and style.

Black - LFPN376BKA
CHF 545.–



RANGE ROVER UMBRELLA

Your cover for all conditions. This wind-tested Range Rover Umbrella features a black leather handle with debossed Range Rover wordmark, spring-loaded automatic opening and polycotton canopy.

Black - LEUM144BKA
CHF 98.–



RANGE ROVER ROUND KEYRING

Crafted from milled steel, this distinctive keyring is inspired by the Range Rover Rotary Dial. With a Black nickel finish and debossed wordmark to the outer ring edge.

Black - LGKR416BKA
CHF 75.–

CLOTHING SIZE GUIDE

MEN'S	CHEST (CM)
S	92
M	97
L	102
XL	107

WOMEN'S	BUST (CM)
8	77
10	82
12	87
14	92
16	97

Product availability and pricing are subject to change. All copy and images remain the copyright of Jaguar Land Rover. Correct at time of publication; subject to availability and market; Jaguar Land Rover reserve the right to remove or change specification of items in the range at any time. The prices including 7.7% VAT.





THE ABOVE AND BEYOND COLLECTION



ABOVE & BEYOND



DESIGNED TO ENDURE

The new Land Rover Defender goes above and beyond. And now there's a collection to match. A collaboration between Land Rover and Musto that's rugged and innovative, it's designed to take you anywhere and take on anything. Made from strong and resilient materials. Crafted with technical precision. And tested in real-world conditions. It's what endurance is made of.



RODINIA HYBRID JACKET

SHIELDS

Showerproof and versatile, this softshell jacket is a defence against the elements. Designed with quick burst zip technology that allows you to remove the sleeves in a single movement, turning it from jacket to gilet in seconds. Featuring fast-drying Durable Water Repellent (DWR®) treated fabric and PrimaLoft® eco-insulation for compressible warmth.

MEN'S RODINIA HYBRID JACKET

Black - CHF 434.-

LIMITED AVAILABILITY

S	L6JM371BKC
M	L6JM371BKD
L	L6JM371BKE
XL	L6JM371BKF

Reflective prints feature glass bead technology.



Reverse coil, bi-colour YKK zip.



Quick burst zips for easy sleeve removal.



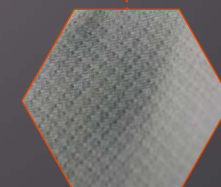
Concealed pocket for sleeve stowage.



Durable Water Repellent (DWR®) coating.



PrimaLoft® Black Eco recycled insulation.



Constructed from ultra-resistant Schoeller® stretch fabric.

WOMEN'S RODINIA HYBRID JACKET
Black - CHF 434.-

8 LGJW377BKJ
10 LGJW377BKJ
12 LGJW377BKK
14 LGJW377BKL
16 LGJW377BKM



MEN'S & WOMEN'S JACKET FEATURES

- Constructed from abrasion-proof Schoeller® stretch fabric.
- Durable Water Repellent (DWR®) coating allows water to bead and run off for faster drying times.
- Primaloft® Black Eco recycled insulation for eco-friendly, lightweight and compressible warmth.
- Ergonomic YKK zip with reverse coil construction.
- Reflective prints feature glass bead technology for enhanced visibility.
- Quick burst zip technology transforms jacket into gilet.
- Concealed pocket for stowing removable sleeves.



SCORIA TECH MID LAYER

Cold weather comfort. Casual style. The ultimate mid layer for outdoor activities. Rugged and warm with a water-repellent finish. Featuring a 4-way stretch construction for unrivalled flexibility and comfort. Complete with orange shock-cords to the hood.



MEN'S SCORIA TECH
MID LAYER

MEN'S SCORIA TECH MID LAYER

Grey - CHF 195.-

S	LGHM372GYC
M	LGHM372GYD
L	LGHM372GYE
XL	LGHM372GYF



MEN'S & WOMEN'S JACKET FEATURES

- Durable Water Repellent (DWR®) coating.
- Glass bead technology.
- 4-way stretch construction.



WOMEN'S SCORIA TECH
MID LAYER

WOMEN'S SCORIA TECH MID LAYER

Grey - CHF 195.-

8	LGHW378GYI
10	LGHW378GYJ
12	LGHW378GYK
14	LGHW378GYL
16	LGHW378GYM



TEPHRA GORE-TEX SHELL PARKA

Endure the extremes. The tech-packed, triple-layer parka is the ultimate protective garment. Featuring a precision-engineered construction that provides superlative wind and waterproof performance.

MEN'S TEPHRA GORE-TEX SHELL PARKA

Black - CHF 515.-

LIMITED AVAILABILITY

S	LGJM368BKC
M	LGJM368BKD
L	LGJM368BKE
XL	LGJM368BKF



MEN'S TEPHRA GORE-TEX
SHELL PARKA



MEN'S & WOMEN'S JACKET FEATURES

- 3-layer GORE-TEX laminate provides superior weatherproofing and breathability.
- Durable Water Repellent (DWR®) coating.
- Water-resistant YKK zips with AquaGuard® (Coil).
- Embedded COHÆSIVE™ cord locks for easy, one-handed adjustment.
- Cargo pockets feature water deflecting top closures.
- Reflective prints feature glass bead technology for enhanced visibility.
- Two-way adjustable hood.



WOMEN'S TEPHRA GORE-TEX
SHELL PARKA

WOMEN'S TEPHRA GORE-TEX SHELL PARKA

Black - CHF 515.-

LIMITED AVAILABILITY

8	LGJW374BKI
10	LGJW374BKJ
12	LGJW374BKK
14	LGJW374BKL
16	LGJW374BKM



WELDED THERMO JACKET

Insulation meets innovation in this ultrasonic Welded Thermo Jacket. Constructed with PrimaLoft® insulation fused with Aerogel for the performance of natural down. Seamless design. Unsurpassed comfort. And peerless durability in all terrains.



MEN'S WELDED
THERMO JACKET

MEN'S WELDED THERMO JACKET Black - CHF 515.-

S	LGJM370BKC
M	LGJM370BKD
L	LGJM370BKE
XL	LGJM370BKF



MEN'S & WOMEN'S JACKET FEATURES

- 3-layer waterproof shell fabric with polyester face.
- Equipped with a RECCO® integrated reflective antenna that helps rescue teams locate you in difficult terrain.
- PrimaLoft® Silver insulation provides warmth of natural down without the weight.
- PrimaLoft® Aerogel-lined pocket keeps mobile phones charged for longer.
- Embedded COHÆSIVE™ cord locks for easy, one-handed adjustment.
- Reflective prints feature glass bead technology for enhanced visibility.



WOMEN'S WELDED
THERMO JACKET

WOMEN'S WELDED THERMO JACKET Black - CHF 515.-

LIMITED AVAILABILITY

8	LGJW376BK1
10	LGJW376BKJ
12	LGJW376BKK
14	LGJW376BKL
16	LGJW376BKM



LITE GORE-TEX PACKABLE JACKET

Feather-light. Fully stowable. This jacket is made from highly breathable GORE-TEX fabric. An articulated construction with fully-taped seams, it ensures superior waterproof protection. A form-fitting jacket for high-intensity activities.



MEN'S LITE GORE-TEX
PACKABLE JACKET

MEN'S LITE GORE-TEX PACKABLE JACKET Black - CHF 329.-

S	LGJM369BKC
M	LGJM369BKD
L	LGJM369BKE
XL	LGJM369BKF



MEN'S & WOMEN'S JACKET FEATURES

- Constructed from ultra-breathable GORE-TEX Active fabric.
- Fully waterproof with taped seams.
- Packs away into pocket for easy attachment to belt loops and bags.
- Reflective prints feature glass bead technology for enhanced visibility.
- Durable Water Repellent (DWR®) coating.
- Embedded COHÆSIVE™ cord lock for easy adjustment.



WOMEN'S LITE GORE-TEX
PACKABLE JACKET

WOMEN'S LITE GORE-TEX PACKABLE JACKET Black - CHF 329.-

8	LGJW375BKI
10	LGJW375BKJ
12	LGJW375BKK
14	LGJW375BKL
16	LGJW375BKM



REVERSIBLE BASE LAYER

A Reversible Base Layer that adapts to the seasons. Made with thermal regulating merino fabric on one side and breathable polyester fabric on the other. Featuring flatlocked seams with black reflective prints and glass bead technology for enhanced low-light visibility.



MEN'S REVERSIBLE
BASE LAYER

MEN'S REVERSIBLE BASE LAYER Grey - CHF 131.-

S	LGTM373GYC
M	LGTM373GYD
L	LGTM373GYE
XL	LGTM373GYF



MEN'S & WOMEN'S BASE LAYER FEATURES

- Merino fabric provides thermal regulation, wicking and anti-odour properties.
- Reverse side features polyester fabric that's breathable, wicking and fast-drying.
- UPF 30 sun protection.
- Reflective prints feature glass bead technology for enhanced visibility.
- Water-resistant pocket for phone.



WOMEN'S REVERSIBLE
BASE LAYER

WOMEN'S REVERSIBLE BASE LAYER Black - CHF 131.-

8	LGTW379BKI
10	LGTW379BKJ
12	LGTW379BKK
14	LGTW379BKL
16	LGTW379BKM

LAND ROVER MUSTO LOGO T-SHIRT

A timeless T-shirt. An iconic accessory. Featuring a distinctive topographic logo and orange piping to the neck. Made from breathable cotton.

FEATURES

- Topographic logo design.
- Features contrast piping.
- 100% soft cotton jersey.



MEN'S LAND ROVER MUSTO LOGO T-SHIRT Grey - CHF 57.-

S	LHTM947GMC
M	LHTM947GMD
L	LHTM947GME
XL	LHTM947GMF

LAND ROVER MUSTO LOGO HOODIE

Casual hoodie. Classic design. This stylish mid layer comes in Gunmetal Grey with distinctive orange detailing. Featuring topographic logo to the front. Made from 100% cotton.

FEATURES

- Jersey-lined hood in contrast orange.
- Ideal layer for outdoor activity.
- 100% cotton loop-back fabric.



MEN'S LAND ROVER MUSTO LOGO HOODIE Gunmetal Grey - CHF 138.-

S	LHHM454GUC
M	LHHM454GUD
L	LHHM454GUE
XL	LHHM454GUF



ABOVE AND BEYOND BEANIE

Simple. Subtle. Essential. A double-layered beanie that offers twice the protection in the great outdoors. Designed with a reflective label and turned-up cuff. Headwear that prepares you for anything.

FEATURES

- Double layered for warmth.
- Comfortable ribbed construction.
- Reflective branded label.

Black - CHF 35.-

LHCH458BKA



ABOVE AND BEYOND SUNGLASSES

Technically proficient sunglasses with cutting-edge design. Made from ultra-light Grilamid Polyamide. Featuring single-mould frames with matte finish and 100% UVA, UVB and UVC protection. Supplied in a durable Land Rover travel case.

Orange lens - CHF 250.-

LGGM9450RA

Brown lens - CHF 250.-

LGGM944MXA

FEATURES

- Polarised lenses with matte-finish frames.
- Constructed with UV400 filter.
- Integrated grip on temples.
- Rugged outdoor case featuring Above and Beyond zip-pulls.
- Also available with Smoked Grey frames and Brown lenses.



ABOVE AND BEYOND BLIZZARD COAT

PROTECTS

The ultimate defence for dogs. This technical outer layer protects dogs against the cold and the wet. Features weatherproof outer made from black hexagon nylon. With 4 layers for superior warmth, and 4 reflective points for low-light visibility. Designed for easy adjustment and a precision fit.

FEATURES

- Tail opening.
- Leather strap.
- Reflective stitching.

Black and Orange

S	LGPT938MXC - CHF 65.-
M	LGPT938MXD - CHF 75.-
L	LGPT938MXE - CHF 85.-
XL	LGPT938MXF - CHF 95.-



3 point adjustment for perfect fit.

Reflective piping for low-light visibility.

Silicone moulded badge.



Waterproof nano-treated outer.



Micro-fleece base layer for superior warmth.



Underbody protection.



ABOVE AND BEYOND DOG HARNESS

Next generation harness. Designed for comfort and made with hard-wearing components. Featuring fully-padded body with breathable mesh lining. Includes sports buckle, padded traffic handle and rust-resistant nickel D-ring.

FEATURES

- High-resistance hexagon jacquard nylon.
- Fully adjustable for a secure fit.
- Removable chest pad for ease of movement.
- Reflective print and piping.
- Attachment loops for accessories.

Black and Orange

S	LGPT937MXC - CHF 50.-
M	LGPT937MXD - CHF 60.-
L	LGPT937MXE - CHF 70.-



ABOVE AND BEYOND ADJUSTABLE DOG LEAD

Designed for visibility. Woven for endurance. This adjustable dog lead with bungee cord is created for all-round versatility. Features a padded handle, Land Rover branding and reflective piping for visibility in low light.

FEATURES

- Traffic handle for close control.
- Shock absorbing cord.
- Land Rover utility clip on handle.

Black and Orange - CHF 44.-

LGPT939MXA



ABOVE AND BEYOND PORTABLE PET BOWL

A lightweight foldaway solution for dogs on the move. 1.5 litre capacity ideal for holding food and liquids. Made with rugged black nylon straps. Stands upright. Packs away easily. Convenient to transport and clean.

FEATURES

- Lightweight solution for feeding and drinking.
- Rolls up easily into bag.
- Sturdy, water-resistant construction.

Black and Orange - CHF 27.-

LGPT942MXA



ABOVE AND BEYOND REFLECTIVE DOG COLLAR

Modern collar. Comfort fit. A technical dog collar for outdoor adventures. Features secure construction, with a nylon outer weave for endurance, and neoprene padding for comfort. Designed with reflective orange piping and handy utility clip.

FEATURES

- Made from hard-wearing materials.
- Designed for maximum comfort.
- Hook and loop adjustment.
- Reflective stitching for increased visibility in low light.

Black and Orange

S LGPT940MXC - CHF 27.-
M LGPT940MXD - CHF 32.-
L LGPT940MXE - CHF 37.-



ABOVE AND BEYOND DOG TOY

A toy made to go the distance. Featuring a detailed tread pattern replicating the Land Rover tyre. Safe, durable and designed to gently clean teeth.

FEATURES

- Made from reinforced material.
- Bouncy, lightweight and hard-wearing.

Black - CHF 22.-

LGPT941BKA



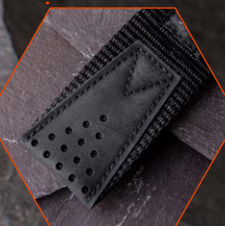
ABOVE AND BEYOND
FUNCTIONAL ACTIVITY BELT

SECURES

Rugged, reliable and remarkably strong. Featuring an ultra-robust webbing construction with a tensile strength of 6000kg. Fitted with a hard-wearing HYPALON™ stopper. And secured with the world's safest and strongest ANSI COBRA® buckle. A belt that goes beyond the call of duty when you have to.

Black - CHF 125.-

S/M LGGF382BK4
L/XL LGGF382BK6



HYPALON™ stopper
for heavy-duty
outdoor use.



Features an ANSI
COBRA® buckle:
the world's safest
and strongest buckle.



Ultra-robust webbing
construction.

WIDTH
38mm

WEBBING TENSILE STRENGTH
6000kg

SECURED BY AN
**ANSI
COBRA®**
BUCKLE



MIROVIA SEAM SEALED BACKPACK

HAULS

The go-anywhere, take-anything backpack. Constructed from 500D PVC material chosen for its uncompromising quality and significant strength. Designed with a large roll-top and heat-sealed seams to keep moisture out. Complete with HYPALON™ lashing points and a release valve for compact packing.

FEATURES

- 500D PVC material and heat-sealed seams defend contents against water damage.
- 25 litre main compartment with computer pocket for safer storage.
- Exterior features HYPALON™ lashing points.
- Finished with reflective print for superior visibility.
- Hard-wearing valve releases pressure for compact packing.

Black - CHF 169.-

LGLU385BKA



Features robust 500D PVC material and heat-sealed seams.



25 litre main compartment with computer pocket.



Stitched HYPALON™ lashing points.



Integrated release valve aids compact packing.



ABOVE AND BEYOND FLASK

SUSTAINS

This robust, double-walled steel flask keeps liquids cold for up to 24 hours and hot for up to 15 hours. Featuring an easy-grip design that can be held with gloves. Durable and rugged with a nylon cord for easy attachment.

Black - CHF 52.-

LGGF393BKA

KEEPS LIQUIDS COLD FOR UP TO

24hrs

KEEPS LIQUIDS HOT FOR UP TO

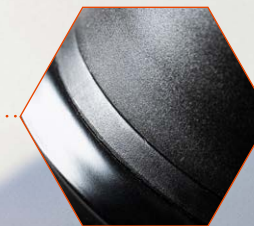
15hrs

CAPACITY

500ml



Features easy-pour lid with removable drinking cup.



Waterproof seals for secure transportation of liquids.



Double-walled steel flask means liquid maintains its temperature for longer.



Ergonomic barrel designed for superior grip.



Nylon cord for easy attachment.



LEROVA TRAVEL WALLET

This durable travel wallet is built to safeguard your essentials from the elements. 23cm x 3cm x 12cm.

FEATURES

- Rugged, water-resistant construction.
- Protects your items from water damage.
- Attaches to bags and belt loops with hard-wearing carabiner.

Black - CHF 59.-

LGLU383BKA



ABOVE AND BEYOND WATER BOTTLE

A technical water bottle with easy-grip exterior. Constructed from Borosilicate glass that is resistant to thermal shock, it can be easily attached to travel bags. Super durable and expedition friendly.

FEATURES

- Silicone sleeve.
- Liquid volume marker.
- Watertight lid.
- Anti-slip base.

Black - CHF 44.-

LGGF392BKA



ABOVE AND BEYOND BLUETOOTH SPEAKER

Waterproof. Travel-ready. This multi-function Bluetooth speaker is compact enough to take anywhere. And tough enough to take the knocks. 18cm x 5cm x 8cm.

FEATURES

- Reinforced portable construction.
- Impact resistant and dustproof.
- Carabiner attaches to bags.
- NFC pairing. USB charging.
- Doubles as power bank and mobile speakerphone.
- 12 hour battery.
- Waterproof to 1 metre IP67.

Black - CHF 118.-

LGGF395BKA



Hooks on to bag with a carabiner.



ABOVE AND BEYOND CAP

Enhanced breathability and low-light visibility. This quick-drying cap is designed to keep you comfortable, and put your performance first come rain or shine.

FEATURES

- UPF 40 sun protection.
- Open mesh side panels.
- 3M reflective accents and branding.
- Quick-dry fabrics and ventilation.
- Reflective print to the rear.

Black - CHF 44.-

LGCH380BKA



ABOVE AND BEYOND MICROFIBRE ACTIVE TOWEL

Pack light. Stay dry. This branded microfibre active towel is made from a high-wicking polyester blend that's light, fast-drying and easy to store.

FEATURES

- High-wicking polyester blend.
- Branded print to one side and orange trim.
- Easy storage in a drawstring pouch.
- Unfolded Size: 110cm x 65cm.
- Folded Size: 16cm x 20cm.

Black - CHF 44.-

LGGF386BKA



ABOVE AND BEYOND MULTI TECH GLOVES

Dynamic movement. Resilient protection. These performance gloves are lightweight, versatile and can be easily adjusted for a tailored fit. Tested extensively by Land Rover Experience for a multitude of outdoor uses.

FEATURES

- Raised silicone print for enhanced grip.
- Hard-wearing construction.
- Conductive finger-pads for use on any touchscreen device.
- Breathable, anatomical comfort.
- Velcro adjuster on neoprene cuffs.

Black - CHF 81.-

S/M LGVM381BK4
L/XL LGVM381BK6



Conductive finger-pads work on touchscreens.



ABOVE AND BEYOND MULTI TOOL

ADAPTS

Does everything. Goes anywhere. This handy tool has been designed for hard-wearing use both on and off road. Features 9 individual tools made from reinforced stainless steel.*

FEATURES

- Spring-action pliers.
- Knife with safety lock.
- Bottle opener.
- Serrated blade.
- Phillips screwdriver.
- Can opener.

Orange – CHF 59.–

LGGF388BKA



ABOVE AND BEYOND POCKET MULTI TOOL

Pocket-sized and packed with tools. This all-in-one pocket multi tool is made from stainless steel and reinforced with a black aluminium cover. Small, sleek, but seriously useful.*

FEATURES

- Pliers.
- Bottle opener built into cutter.
- Carabiner attaches to bags.
- Phillips screwdriver.
- Knife with safety lock.

Black – CHF 44.–

LGGF391BKA



*Minimum age limit applies.

ABOVE AND BEYOND FOLDING SHOVEL

A tool to travel with. The all-terrain shovel folds down into a portable size. Its sturdy construction and serrated edge make light work of the toughest tasks. Finished with laser engraved branding.

FEATURES

- Reinforced folding shovel designed for easy storage.
- Easy-grip.
- Dual edged for multi-purpose use.
- Rigid handle for leverage and durability.

Black – CHF 52.–

LGGF387BKA



LAND ROVER X ELLIOT BROWN
HOLTON PROFESSIONAL WATCH

ENDURES

Designed by experts. Used by professionals. This exclusive timepiece, created in collaboration with premium English watchmaker Elliot Brown, offers precision timekeeping and unrelenting durability. Featuring scratch-resistant sapphire crystal, unidirectional bezel and luminous dial and hands. With two straps for all-terrain versatility. Shock resistant. Triple-sealed for water protection. And capable of prolonged exposure to the elements. It's a watch that knows no limits.

FEATURES

- 43mm case.
- Tested in water at 200m.
- Screw-down triple-sealed crown.
- Rubber strap resistant to temperature extremes.
- Super-LumiNova luminous hands and dial markings.

Black – CHF 795.–

LHWM992BKA



High grip uni-directional bezel.



Ultra shock-resistant casing.



Technical webbing strap.



Fitted soft rubber strap.

TESTED IN WATER AT

200m

SHOCK-RESISTANT TO

5,000G

CASE

43mm



SCALE MODELS

The new Land Rover Defender represents over 70 years of innovation. This range of scale models captures all their rugged, iconic style. Made from high quality materials. Rich with detail and infused with a legendary history.



DEFENDER 90 FIRST EDITION SCALE MODEL 1:43

Collectors' edition replica of the new Land Rover Defender 90 in Pangea Green with contrast roof. High quality diecast model made from zinc alloy.

Pangea Green – CHF 89.–

LGDC9216NY



DEFENDER 110 EXPLORER PRO SCALE MODEL 1:43

Collectors' edition replica of the new Land Rover Defender 110 with Explorer Pro accessory pack in Indus Silver. High quality diecast model made from zinc alloy.

Indus Silver – CHF 89.–

LGDC922SLY



DEFENDER 110 X SCALE MODEL 1:43

Collectors' edition replica of the new Land Rover Defender 110 X in Gondwana Stone. High quality diecast model made from zinc alloy.

Gondwana Stone – CHF 89.–

LGDC953BNY



CLOTHING FEATURES GUIDE



RODINIA HYBRID JACKET

PRIMALOFT.

DWR

ABRASION
RESISTANCE

PRIMALOFT.
AEROGEL

YKK
QUICKBURST

MODULAR
SYSTEMS



SCORIA TECH MID LAYER

DWR

GLASSBEAD
TECHNOLOGY



TEPHRA GORE-TEX SHELL PARKA

GORE-TEX®

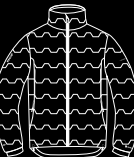
DWR

GLASSBEAD
TECHNOLOGY

Cohæsive™
EMBEDDED COMPONENTS

THREE LAYER SHELL

TAPED SEAMS



WELDED THERMO JACKET

Cohæsive™
EMBEDDED COMPONENTS

DWR

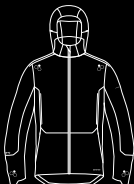
GLASSBEAD
TECHNOLOGY

ULTRASONIC
WELDING

PRIMALOFT.
AEROGEL

PRIMALOFT.
CROSS CORE
TECHNOLOGY

RECCO



LITE GORE-TEX PACKABLE JACKET

GORE-TEX®

DWR

GLASSBEAD
TECHNOLOGY

Cohæsive™
EMBEDDED COMPONENTS

PACKABLE

TAPED SEAMS



REVERSIBLE BASE LAYER

Reversible

HYBRID

30
UPPER THIRTY

GLASSBEAD
TECHNOLOGY

CLOTHING SIZE GUIDE

MEN'S	CHEST (CM)
S	86 - 91.5
M	94 - 99
L	101.5 - 106
XL	109 - 114

WOMEN'S	BUST (CM)
8	78.5 - 81
10	82 - 86
12	87 - 91.5
14	92 - 96.5
16	97 - 101.5

Product availability and pricing are subject to change. All copy and images remain the copyright of Jaguar Land Rover. Correct at time of publication; subject to availability and market; Jaguar Land Rover reserve the right to remove or change specification of items in the range at any time. The prices including 7.7% VAT.



THE HERITAGE COLLECTION



ABOVE & BEYOND



THE ICON LIVES ON

In 1948, Maurice Wilks and his brother Spencer unveiled the world's first Land Rover. Over 70 years later, what began life as a sketch in the sands of Anglesey has become an international symbol of adventure. An icon that lives on with our Heritage Collection. Apparel and lifestyle accessories inspired by Land Rover's rich heritage, and made to last for generations to come.

MEN'S HERITAGE GRAPHIC T-SHIRT

100% cotton T-shirt with Heritage logo to the chest. Features back neck woven label and wordmark side tab.

Grey Marl - CHF 54.-

S LFTM946GMC
M LFTM946GMD
L LFTM946GME
XL LFTM946GMF



MEN'S HERITAGE FLANNEL SHIRT

Heritage in every stitch. This 100% brushed cotton shirt in Grey features an original check design with faux horn buttons, button down collar, two chest pockets and branded heritage tab.

Grey - CHF 108.-

S LFSM948GYC
M LFSM948GYD
L LFSM948GYE
XL LFSM948GYF



MEN'S HERITAGE POLO SHIRT

100% cotton piqué polo shirt in Grey Marl with contrast section to the upper chest. Features rib collar and cuffs with contrast tipping and wordmark side tab. Heritage logo to sleeve.

Grey Marl - CHF 81.-

S LFPM950GMC
M LFPM950GMD
L LFPM950GME
XL LFPM950GMF



UNISEX HERITAGE CAP

Classic baseball cap in Grey Marl with navy peak and trim. Features embroidered Heritage logo to the front with wordmark tab to one side.

Grey Marl - LFCH943GMA

CHF 36.-





LAND ROVER CLASSIC WATCH

A new take on a Heritage classic. Featuring a rotating outer bezel that can be aligned to track a second time zone. With luminous hands and indices, Land Rover wordmark, date aperture and textured Italian leather strap. Water-resistant to 10 ATM. Supplied in Land Rover presentation box.

White - LHWM975WTA
CHF 259.–



LAND ROVER HERITAGE WATCH

A watch that takes you back. Inspired by original pilot designs, it features chronograph sub-dials, Heritage logo and leather strap with stitching detail. Complete with date aperture, matte black dial and ion-plated case. Supplied in Land Rover presentation box.

Black - LHWM977BKA
CHF 359.–



HERITAGE BOTTLE OPENER KEYRING

Handy keyring wrapped in fine leather with flip-out bottle opener. Features debossed Heritage logo, split ring and a lobster clasp.

Brown - LFKR360BNA
CHF 32.–



ADVENTURE BEAR

A loyal companion for all of your little one's expeditions. Land Rover Adventure Bear dressed in oval badge shirt, shorts and explorer's hat with messenger bag.

Brown - LDTY913BNA
CHF 57.–



LAND ROVER ICON BOOK

The official Land Rover book covering the Series and Defender models. Containing ten chapters that celebrate these iconic vehicles and the people who drive them.

200 pages - LFGF412NAA
CHF 89.–



DEFENDER KEYRING

Take the spirit of the Defender with you. This nickel-plated miniature die-cast keyring features a Land Rover wordmark etched into the split ring.

Silver - LEKR323SLA
CHF 27.–



HERITAGE LOGO MUG

White bone china mug with Heritage logo to one side and Land Rover Defender print to the other.

White - LFMG363WTA
LIMITED AVAILABILITY
CHF 21.–



HERITAGE PIN BADGE SET

Brass pin badges featuring a range of iconic Land Rover symbols. Includes Series I, Classic Range Rover, Heritage logo, oval badge and Heritage Station Wagon logo. Includes presentation tin.

Set of 5 - LFGF362NVA
LIMITED AVAILABILITY
CHF 36.–

LAND ROVER

LEATHER WEEKEND BAG

Packed with versatility. Made from highly supple oil-washed natural-grain brown leather, this Leather Weekend Bag is flexible in every sense. Ideal for day trips or extended excursions, it features sturdy handles, a detachable padded shoulder strap and a practical zip pocket. Includes protective dust bag.

W 40cm H 18cm

Brown - LELU364BNA

CHF 430.-

HERITAGE DUFFLE BAG

An over-the-shoulder drawstring duffle bag in Navy with white trim. Made from hardwearing canvas, this bag features an embroidered Heritage logo to the front.

H 50cm D 30cm

Navy - LFLG361NVA

CHF 166.-



THE HERITAGE COLLECTION



HERITAGE TOTE BAG

Carry the enduring spirit of Land Rover with you wherever you go. 100% cotton reusable canvas tote bag with Series I graphic to the front.

White - LFLU046WTA

CHF 9.-



LAND ROVER

HUE MUG

Start your day's journey with this ceramic mug in Grasmere Green, featuring the HUE 166 logo with relief border. Microwave and dishwasher safe.

Grasmere Green - LRCEAHUEG
CHF 24.–



1 HUE NOTEBOOK SMALL A6

Made with eco-friendly stone paper that's tough, tear-resistant, greaseproof and waterproof, this A6 notebook features the HUE 166 number plate logo. Includes a HUE technical drawing to the inside.

Grasmere Green - LDNB561GNA
CHF 5.–

2 HUE NOTEBOOK AND ORGANISER

Take note. This HUE canvas notebook and organiser has a grey contrast stitch and versatile pocket storage. Features a HUE 166 woven badge.

Grasmere Green - LDNB562GNA
CHF 28.–



THE HERITAGE COLLECTION



MEN'S HUE GRAPHIC T-SHIRT

A 100% cotton T-shirt with a technical drawing of the famous HUE 166 on the chest.

S LDTM558BKC
M LDTM558BKD
L LDTM558BKE
XL LDTM558BKF

Black - CHF 42.–



HUE 166 KEYRING

Classic HUE 166 number plate logo keyring in polished chrome.

Black - LDKR914BKA

CHF 27.–



HUE TEDDY BEAR

Children's soft toy dressed in Heritage HUE 166 overalls and tweed flat cap. Sporting a Land Rover logo, he makes a popular gift for any child. Suitable for all ages with appropriate adult supervision.

Brown - LDTY618BNA

CHF 64.–



HUE CERAMIC PET BOWL

A sturdy Grasmere Green ceramic pet bowl with an embossed HUE 166 number plate logo to the front.

Small - LFPT398GNA

CHF 35.–

Large - LDPT788GNA

CHF 38.–



**BARBOUR TARTAN
DOG BANDANA**

A bandana specially made for dogs, featuring Barbour for Land Rover Tartan in 100% cotton.

S / M - BEPT286MX4
CHF 36.-



**BARBOUR TARTAN
DOG HARNESS**

Stylish and functional dog harness featuring Barbour for Land Rover Tartan.

L - BEPT287MXE
CHF 55.-



**BARBOUR TARTAN
DOG COLLAR**

Barbour for Land Rover Tartan collar lined with leather. Features aged brass-plated metal fittings.

CHF 69.-

S BEPT284MXC
M BEPT284MXD
L BEPT284MXE



**BARBOUR TARTAN
DOG LEAD**

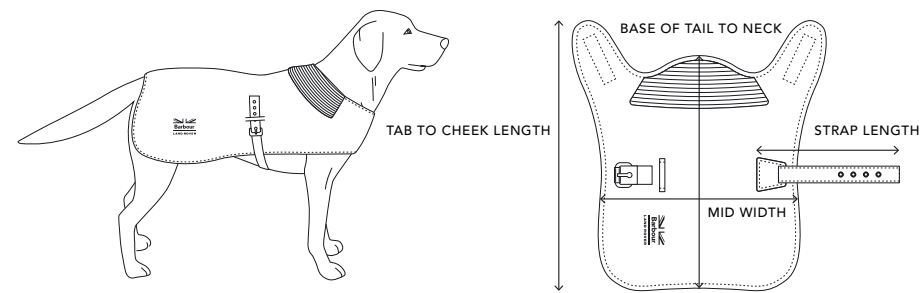
Made from real leather, this lead features contrast top stitching and aged brass-plated fittings.

One size - BEPT285MXA
CHF 95.-



BARBOUR WAX DOG COAT
Keep your best friend safe from the elements in this water-resistant, wax jacket. Made with Barbour for Land Rover Tartan, it features a collar that lifts for extra protection.
CHF 79.-
LIMITED AVAILABILITY
S BEPT289OLC
M BEPT289OLD
L BEPT289OLE

DOG COAT SIZE GUIDE



SIZE	S	M	L	XL
BREED	Terrier	Spaniel	Retriever	Pointer
NECK TO TAIL	35cm	45cm	55cm	66cm
MID WIDTH	30cm	38cm	46cm	55cm
TAB TO CHEEK LENGTH	44cm	57cm	70cm	82cm
STRAP LENGTH	26cm	34cm	43cm	52cm

DOG COLLAR SIZE GUIDE

SIZE	S	M	L
COLLAR MEASUREMENTS	14mm x 40cm	19mm x 53cm	25mm x 63.5cm
TO FIT NECK	27.5cm x 35.5cm	36cm x 46mm	47cm x 56.5cm

CLOTHING SIZE GUIDE

MEN'S	S	M	L	XL
CHEST (CM)	92	97	102	107

Product availability and pricing are subject to change. All copy and images remain the copyright of Jaguar Land Rover. Correct at time of publication; subject to availability and market; Jaguar Land Rover reserve the right to remove or change specification of items in the range at any time. The prices including 7.7% VAT.



ABOVE & BEYOND